

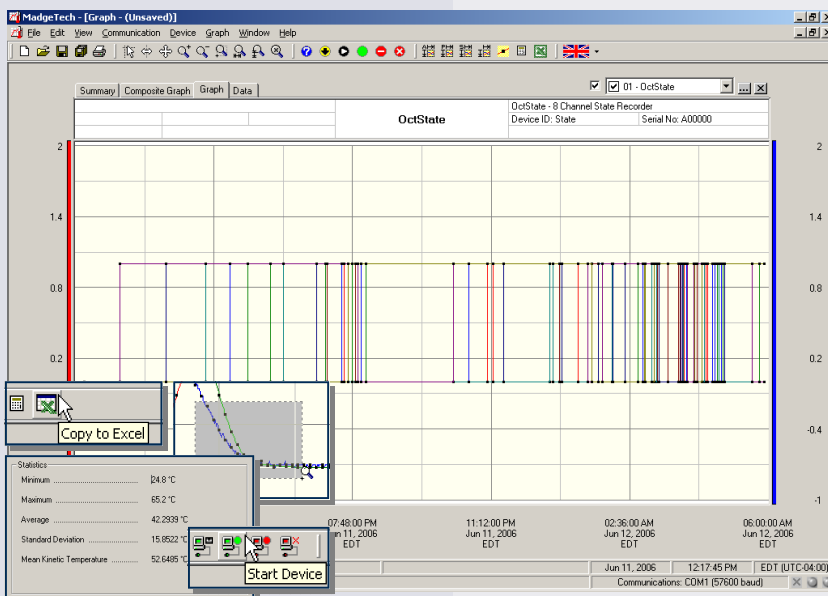
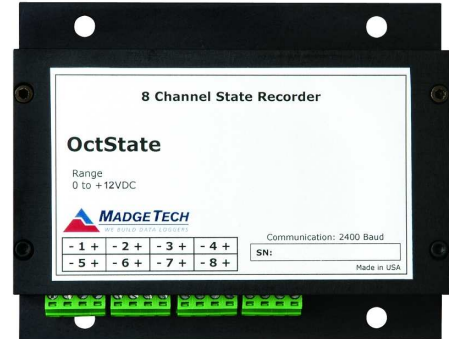
Features

- Real-time operation
- Accepts TTL or contact closure inputs
- Compact
- Programmable engineering units
- Programmable start time
- Low cost
- User-friendly
- Convenient size
- Reusable

Applications

- Security systems
- Power supply on/off
- Monitoring gas, water or electric pumps
- Time studies
- Status or state recording
- Relay or dry contact closure
- TTL high/low
- Replace costly strip chart recorders

The OctState is a eight channel, battery powered, stand alone state recorder. This is an all-in-one compact, portable, easy to use device that will measure and record up to 52,428 state changes. The storage medium is non-volatile solid state memory, providing maximum data security even if the battery becomes discharged. The device can be started and stopped directly from your computer and its small size allows it to fit almost anywhere. The OctState makes data retrieval quick and easy. Simply plug it into an empty COM or USB port and our user-friendly software does the rest.



MadgeTech Data Recorder Software displays status changes in an easy to use graph.

The Windows®-based software package allows the user to effortlessly collect, display and analyze data. A variety of powerful tools allow you to examine, export, and print professional looking data with just a click of the mouse.

Click [MadgeTech Software](#) for more information or to download the software.

OCTSTATE SPECIFICATIONS*

Input Connection: 8 removable screw terminals
Input Low: < 0.4V
Input High: > 2.7V
Input Range: 0 to 30V
Input Impedance: > 1K Ω
Time Resolution: 1 second (reading rate dependent)

Engineering Units: User may define units up to 10 characters in length. This value is stored within the device.

Scale Factor: User may program any desired scaling factor from $\pm 1.000E-31$ to $\pm 9.999E+31$. The scaling factor is stored within the device.

Start Modes: Software programmable immediate start or delay start up to six months in advance

Reading Interval: 1 reading every second to 1 every 12 hours

Memory: 52,428 state changes; 419,872 total readings; software configurable memory wrap

Real Time Recording: May be used with PC to monitor and record data in real time

Calibration: Digital calibration through software

Calibration Date: Automatically recorded within device

Battery Type: 9V lithium or alkaline battery included; **user replaceable**

Battery Life: 1 year typical

Data Format: Date and time stamped state changes (on/off) engineering units specified through software

Time Accuracy: ± 1 minute/month (at 20°C, RS232 cable not in use)

Computer Interface: PC serial or USB (interface cable required); 2,400 baud

Software: Windows 95/98/ME/NT/2000/XP/Vista based software

Operating Environment: -20 to +60°C, 0 to 95%RH non-condensing

Dimensions: 3.5" x 4.4" x 1.5" (89mm x 112mm x 39mm)

Weight: 17 oz (480 g)

BATTERY WARNING: DISCARD USED BATTERY PROMPTLY. KEEP OUT OF REACH OF CHILDREN. DO NOT DISPOSE OF IN FIRE, RECHARGE, PUT IN BACKWARDS, DISASSEMBLE, OR MIX WITH OTHER BATTERY TYPES. MAY EXPLODE, FLAME OR LEAK AND CAUSE PERSONAL INJURY.

SOFTWARE FEATURES

Multiple Graphs: Simultaneously analyze data from several units or deployments; easily switch to a single data series

Real-Time Recording: Collect and display data in real-time while continuing to log

Graphical Cursor: One click displays readings by time, value, parameter or sample number

Data Table: Instantly access tabular view for detailed dates, times, values, and annotations

Scaling Options: Autoscale function fits data to the screen, or allows user to manually enter their own values

Formatting Options: Change colors, line styles, plotting options, show or hide channels quickly

Statistics: Calculate averages, min, max, standard deviation, and mean kinetic temperature with the touch of a button

Export Data: Export data in a variety of common formats, or switch to Excel® with a single click

Calibration: Automatically calculate and store calibration parameters

Logger Configuration: Easy set up and launch of data loggers with immediate or delayed start, preferred sample rate, and device ID

Communications: Automatically sets up communications port, or lets user select configuration

Printing: Automatically print graphical or tabular data

*SPECIFICATIONS ARE SUBJECT TO CHANGE WITHOUT NOTICE. SPECIFIC WARRANTY AND REMEDY LIMITATIONS APPLY. CALL 1-603-456-2011 OR GO TO WWW.MADGETECH.COM FOR DETAILS.

ORDERING INFORMATION

<u>Model</u>	<u>Description</u>	<u>Price (U.S.)</u>
OCTSTATE	8 Channel State Recorder	\$699.00
IFC110	Software, manual and RS232 interface cable	\$99.00
IFC200	Software, manual and USB interface cable	\$119.00
U9VL-J	Replacement battery for OctState	\$15.00

For Quantity Discounts call 603-456-2011 or email sales@madgetech.com

ASK ABOUT OUR OTHER DATA RECORDERS

Temperature	Pulse/Event/State
Humidity	Low Level Current
Pressure	Low Level Voltage
pH	RF Transmitters
Level	Intrinsically Safe
Shock	Spectral Vibration
LCD Display	



DOC-1075009-00 REV D 2009.07.01