

Features

- Large, backlit LCD display
- Front keypad w/lock feature
- Standard 1/4" NPT fitting
- High speed download
- Real-time operation
- User-selectable measurement units
- N.I.S.T. traceable calibration
- Min./max. & average statistics
- Programmable start/stop time
- Convenient status indicators
- User replaceable batteries

Applications

- Precision Pressure Recording
- HVAC
- Medical/Pharmaceutical
- Environmental studies
- Replace costly strip chart recorders
- Geothermal

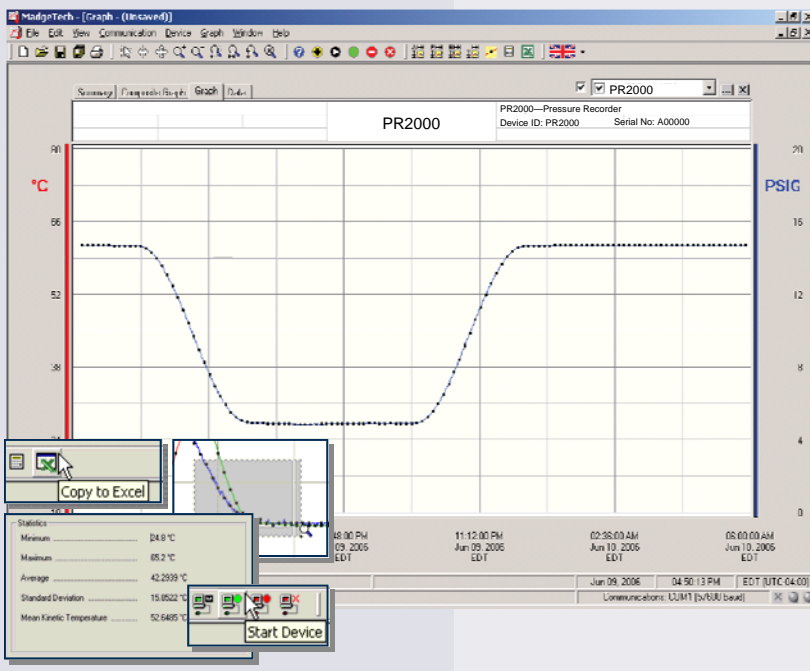
The PR2000 is a battery powered pressure recorder, with an LCD display. It is perfect for applications requiring display pressure readings and a logger.

The 8-button keypad and large LCD provide convenient access to current data and recorder setup. Additionally, memory and battery levels, external power status, and sampling and recording status are shown on the LCD.

Available on-screen data includes: statistics (min, max, average); recording status (start, stop and recording rate); display options (units, text size); and calibration information (date calibrated, date for recalibration). Statistics can be cleared at any time during logging.

With 262,143 readings, the PR2000 has one of the largest memory capacities of any similar data recorder on the market. The non-volatile memory will retain recorded data, even if battery power is lost.

N.I.S.T. traceable calibration is available for users needing to meet regulatory requirements. Creating permanent records, performing data calculations, and the graphing of data is quick and easy: Simply connect the interface cable to an available USB or serial port and, with a few clicks of the mouse, data is downloaded and ready for review or export to Excel®.



MadgeTech Data Recorder Software

displays pressure and temperature data in an easy to use graph.

The Windows®-based software package allows the user to effortlessly collect, display and analyze data. A variety of powerful tools allow you to examine, export, and print professional looking data with just a click of the mouse.

Click [MadgeTech Software](#) for more information or to download the software.

PR2000 SPECIFICATIONS*

Pressure Sensor: Semiconductor strain gauge	Reading Rate: 1 reading every 2 seconds to 1 every 24 hours
Pressure Range: 0 to 30, 100, 300 and 500PSIA/G; 0 to 1000 and 5000PSIA	Calibration: Digital calibration through software
Pressure Resolution: 0.002, 0.005, 0.02, 0.05PSIA/G;	Calibration Date: Automatically recorded within device
Calibrated Accuracy: 2% FSR, 0.25% @ 25°C typical	Battery Type: 6 alkaline AA batteries
Pressure Response Time: 0.1 ms (10 to 90% FSR)	Battery Life: 1 year battery life at 1 minute reading rate with display off. 30 days typical with continuous display use. Optional AC adapter available.
DOT-MATRIX LCD	Data Format: PSIG, inHg, mmHg, bar, atm, Torr, Pa, kPa, MPa
Dimensions: 2.5" x 1.375 (63mm x 35mm)	Time Accuracy: ±1 minute/month (at 20° to 30°C)
Text: Configurable channel text size	Computer Interface: PC serial or USB (interface cable required); 115,200
Indicators: Power, status, memory	Software: Windows 95/98/ME/NT/2000/XP/Vista based software
Backlight: Configurable w/auto shut-off and contrast adjustment	Operating -20 to +60°C, 0 to 95%RH non-condensing
Start/Stop Time: Software programmable start time and date, up to six months in advance;	Dimensions: 5.1" x 4.8" x 1.78" (130mm x 122mm x 45mm)
Memory: 262,143 total readings; software configurable memory wrap	Weight: 40 oz (1134 g)
	Enclosure: Black anodized aluminum case/NPT Steel
	Approvals: CE

BATTERY WARNING: RISK OF FIRE OR EXPLOSION. DO NOT RECHARGE, FORCE OPEN, HEAT OR DISPOSE OF IN FIRE.

SOFTWARE FEATURES

Multiple Graphs: Simultaneously analyze data from several units or deployments; easily switch to a single data series	Statistics: Calculate averages, min, max, standard deviation, and mean kinetic temperature with the touch of a button
Graphical Cursor: One click displays readings by time, value, parameter or sample number	Export Data: Export data in a variety of common formats, or switch to Excel® with a single click
Data Table: Instantly access tabular view for detailed dates, times, values, and annotations	Calibration: Automatically calculate and store calibration parameters
Scaling Options: Autoscale function fits data to the screen, or allows user to manually enter their own values	Logger Configuration: Easy set up and launch of data loggers with immediate or delayed start, preferred sample rate, and device ID
Formatting Options: Change colors, line styles, plotting options, show or hide channels quickly	Communications: Automatically sets up communications port, or lets user select configuration

*SPECIFICATIONS ARE SUBJECT TO CHANGE WITHOUT NOTICE. SPECIFIC WARRANTY AND REMEDY LIMITATIONS APPLY. CALL 1-603-456-2011 OR GO TO WWW.MADGETECH.COM FOR DETAILS.

ORDERING INFORMATION

Model	Description	Price (U.S.)
PR2000-30	0-30PSIA(G) Pressure Recorder with LCD Display	\$849.00
PR2000-100	0-100PSIA(G) Pressure Recorder with LCD Display	\$849.00
PR2000-300	0-300PSIA(G) Pressure Recorder with LCD Display	\$849.00
PR2000-500	0-500PSIA(G) Pressure Recorder with LCD Display	\$849.00
PR2000-1000	0-1000PSIA Pressure Recorder with LCD Display	\$849.00
PR2000-5000	0-5000PSIA Pressure Recorder with LCD Display	\$849.00
NIST	N.I.S.T. Calibration Certificate	Call for Pricing
IFC110	Software, manual and RS232 interface cable	\$99.00
IFC200	Software, manual and USB interface cable	\$119.00
DC9V-NA	9 Volt AC wall mounted Adapter (North American version)	\$13.00
DC9V-EU	9 Volt AC wall mounted Adapter (European version)	\$13.00

ASK ABOUT OUR OTHER DATA RECORDERS

Temperature	Pulse/Event/State
Humidity	Low Level Current
Pressure	Low Level Voltage
pH	RF Transmitters
Level	Intrinsically Safe
Shock	Spectral Vibration
LCD Display	

For Quantity Discounts call 603-456-2011 or email sales@madgetech.com



DOC-1154009-00 REV H 2009.07.01

879 Maple Street · Contoocook, NH 03229
PO Box 50 · Warner, NH 03278 · Phone: (603) 456-2011 · Fax: (603) 456-2012